

BELLA FIGURA

Atacama Lamp

TL234E

Collection Name

HALCYON COLLECTION

Atacama, Chile, is one of the driest areas in the world and within this remote desert lies beauty of ethereal quality. An extra-terrestrial landscape of pink birds and imposing, eerie pockets of water bubbling and jets of steam bursting into the sky. Most unusual of all is the vast white jigsaw spanning as far as the eye can see, the salt flats of Atacama. Our new design of the same name retraces the natural pattern scored through this salt mosaic in a delightful array of glass colours. Finish note as these glass lamps are handmade by our artisans in England, they may vary from piece to piece slightly in dimension and appearance.



TL234 in Blush pink glass and brushed nickel with a 11" tall drum shade in Crepe satin 1806W 22 India

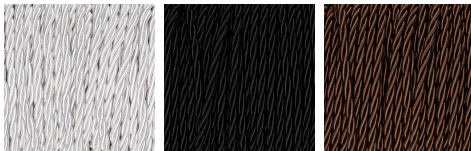
Available Finishes

Neck and Bulb Holder



Brushed Gold Brushed Nickel Brushed Brass

Silk Flex Choice, Switch & Plug Colours

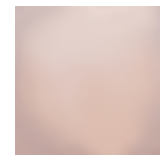


Silver Black Brown

Recommended Shades

11 inch Tall Drum
15 inch Oval Drum

Glass colours



Halcyon Blush
Pink

Shade Silks

Over 300 Standard Silk options available
Inner Card Lining options in Cream / Gold /
Champagne/ Silver / White

Available Sizes

BELLA FIGURA

One Size Only

TL234

Height: 27.5 cm (10.83")

Width: 27 cm (10.63")

Depth: 22 cm (8.66")

Height with Shade: 52cm (11\'' tall drum shade as shown)

Net Weight: 4 kg / 9 lb

Dimensions are measured from the base of the lamp to the middle of the bulb holder and are excluding shade

The overall height with a 11" tall drum shade is 52cm - 20.5"

The overall height with a 15" oval drum shade is 48cm - 19"

Finish note: As these glass lamps are handmade by our artisans in England, they may vary slightly from piece to piece in dimension and appearance