

BELLA FIGURA

Atacama Lamp

TL234E

Collection Name

HALCYON COLLECTION

Atacama, Chile, is one of the driest areas in the world and within this remote desert lies beauty of ethereal quality. An extra-terrestrial landscape of pink birds and imposing, eerie pockets of water bubbling and jets of steam bursting into the sky. Most unusual of all is the vast white jigsaw spanning as far as the eye can see, the salt flats of Atacama. Our new design of the same name retraces the natural pattern scored through this salt mosaic in a delightful array of glass colours.

Finish note as these glass lamps are handmade by our artisans in England, they may vary from piece to piece slightly in dimension and appearance.

Compatible with



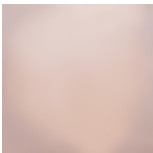
Express



TL234 in Blush Pink Glass and Brushed Nickel with a 11" Tall Drum Shade in Crepe Satin 1806W 22 India

Available Finishes

Glass Colour



Halcyon Blush Pink

Neck and Bulb Holder



Brushed Nickel



Brushed Brass



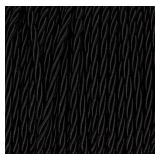
Brushed Gold

Recommended Shades

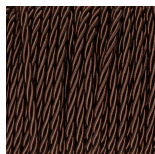
11 inch Tall
Drum

15 inch Oval
Drum

Silk Flex Choice



Black



Brown



Silver

Available Sizes

One Size Only

TL234,

Height: 27.5 cm (10.83")

Width: 27 cm (10.63")

Depth: 22 cm (8.66")

1 E27

Net Weight: 4 kg / 9 lb

Dimensions are measured from the base of the lamp to the middle of the bulb holder and are excluding shade

The overall height with a 11" tall drum shade is 52cm - 20.5"

The overall height with a 15" oval drum shade is 48cm - 19"

Finish note: As these glass lamps are handmade by our artisans in England, they may vary slightly from piece to piece in dimension and appearance