

BELLA FIGURA

Mondrian Wall Light

WL59

Collection Name

HALCYON COLLECTION

"I wish to approach truth as closely as is possible, and therefore I abstract everything until I arrive at the fundamental quality of objects." — Piet Mondrian
Mondrian's Pier and Ocean series describes a gradual abstraction of a waterfront scene, simplifying oblique and indistinct details into parallel, rhythmic lines, which describe the pulse of the ocean. Our Mondrian family is heavily influenced by this astute observation of the underlying patterns in nature and the unending movement of water, drawing on these qualities of order and balance to create these sculpted pieces. This design is available in a mirrored pair.



WL59 in Hammered Antique Gold Leaf with a 15" Oval Drum Shade in 5018W/ 553

Available Finishes

Metal Finishes



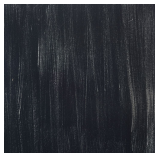
Antique Silver Leaf



Antique Gold Leaf



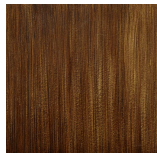
Antique Gold



Lead



Antique Silver



Decorated Bronze

Shade Silks

Over 300 Standard Silk options available

Inner Card Lining options in Cream / Gold / Champagne / Silver / White

Available Sizes

BELLA FIGURA

One size only

WL59

Height: 57.5 cm (22.64")

Width: 34.5 cm (13.58")

Depth: 7.5 cm (2.95")

1 x 25w E12

Max watt and Lamps (Lamps Not Included)

This wall light is available as a mirrored pair,