

# BELLA FIGURA

## Vortex Table Lamp

TL816E

Collection Name  
VEGA COLLECTION

Each Vortex table lamp is a unique art form. No two pieces are exactly the same, owing its sculptural form to a completely handmade, mould-free creation which allows for the unconstrained formation of each lamp's graceful twists and folds. We find ourselves entranced by the frozen fluidity of the Vortex glass, which evokes contemplation with its extraordinary beauty. IMPORTANT NOTE - Celeste and Amber glass finishes are currently only available as singles.

Compatible with



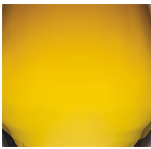
Express



TL816 in Rose and Polished Nickel with 10" Tall Drum in Bennett's 1806W-4501 Platinum

### Available Finishes

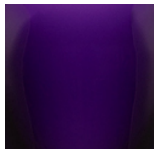
#### Glass Finish



Amber



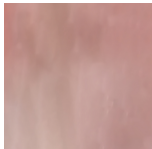
Ballet



Indigo



Celeste



Rose

#### Neck and Bulb Holder



Antique Brass



Pewter

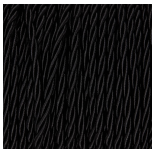


Polished Brass



Polished Nickel

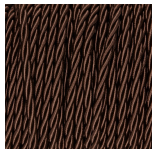
#### Silk Flex



Black



Cream



Brown



Silver

## Available Sizes

---

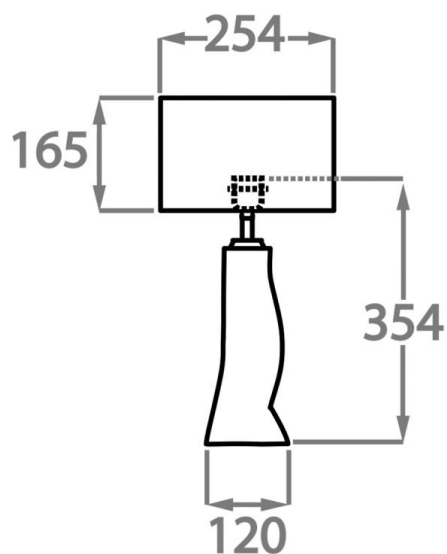
### Size One

TL816,

Height: 34.5 cm (13.58")

Diameter: 12 cm (4.72")

Bulbs: 1 x 40W E27



Dimensions are measured from the base of the lamp to the middle of the bulb holder and are excluding shade.

Overall height with recommended 10" tall drum shade is 56.9cm - 22.4"