

BELLA FIGURA

Vortex Lamp

TL816

Collection Name

VEGA COLLECTION

Each Vortex table lamp is a unique art form. No two pieces are exactly the same, owing its sculptural form to a completely handmade, mould-free creation which allows for the unconstrained formation of each lamp's graceful twists and folds. We find ourselves entranced by the frozen fluidity of the Vortex glass, which evokes contemplation with its extraordinary beauty. **IMPORTANT NOTE** - Celeste and Amber glass finishes are currently only available as singles.

Compatible with



Express



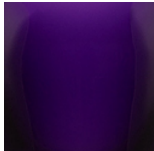
TL816 in Indigo and Polished Nickel with 10" Tall Drum in Bennett's 1806W-4501 Platinum

Available Finishes

Glass Finish



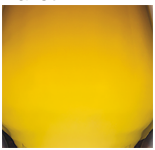
Ballet



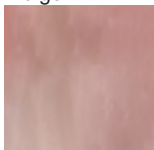
Indigo



Celeste



Amber



Rose

Neck and Bulb Holder



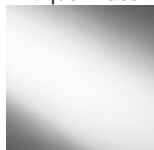
Antique Brass



Pewter



Polished Brass



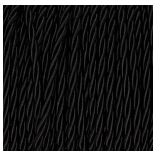
Polished Nickel

Recommended Shade(s) (OPTIONAL)



10" Tall Drum

Silk Flex



Black



Cream



Brown



Silver

Available Sizes

Size One

TL816,

Height: 34.5 cm (13.58")

Diameter: 12 cm (4.72")

Bulbs: 1 × 40W E27

Cable Exit: Top

Dimensions are measured from the base of the lamp to the middle of the bulb holder and are excluding shade.

Overall height with recommended 10" tall drum shade is 56.9cm - 22.4"