

BELLA FIGURA

Tupelo Lamp

TL237

Collection Name

HALCYON COLLECTION

The Tupelo tree towers above all, an ancient sentinel keeping its silent vigil at the waters edge and proudly displaying its cragged and banded bark. Our Tupelo table lamp is garbed in a coat of chiselled groves which echo the bark of these monumental trees. **IMPORTANT NOTE** - Clear glass finish is currently only available in singles.

Compatible with



Express



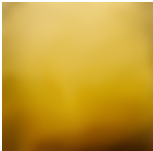
Yacht Club



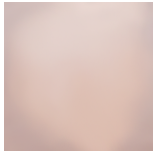
TL237 in Ocean Blue and Brushed Nickel with a 12" Tall Drum Shade in Crepe Satin
1806W-0312 Mist

Available Finishes

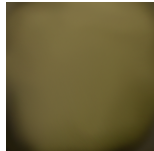
Glass Finish



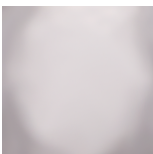
Halcyon Amber



Halcyon Blush
Pink



Halcyon Bronze



Halcyon Clear



Halcyon Ocean
Blue

Neck and Bulb Holder



Brushed
Bronze



Brushed Gold

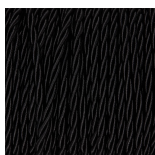


Brushed Nickel

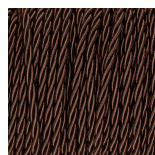
Recommended Shade(s) (OPTIONAL)

12" Tall Drum

Silk Flex



Black



Brown



Cream



Silver

Available Sizes

One size only

TL237,

Height: 45 cm (17.72")

Diameter: 17 cm (6.69")

Bulbs: 1 x 40W E27

Net Weight: 4 kg / 9 lb Cable Exit:

Bottom

Dimensions are measured from the base of the lamp to the middle of the bulb holder and are excluding shade

The overall height with a 12" tall drum shade 70cm - 27.5"

Finish note: As these glass lamps are handmade by our artisans in England, they may vary slightly from piece to piece in dimension and appearance