

# BELLA FIGURA

## Tupelo Lamp

TL237E

Collection Name

**HALCYON COLLECTION**

The Tupelo tree towers above all, an ancient sentinel keeping its silent vigil at the waters edge and proudly displaying its cragged and banded bark. Our Tupelo table lamp is garbed in a coat of chiselled grooves which echo the bark of these monumental trees. **IMPORTANT NOTE** - Clear glass finish is currently only available in singles.

### Compatible with



Express



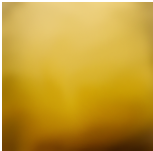
Yacht Club



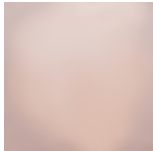
TL237 in Bronze and Brushed Brass with a 12" Tall Drum in Crepe Satin 1806W-326

### Available Finishes

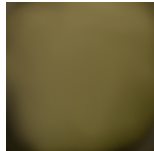
#### Glass Finish



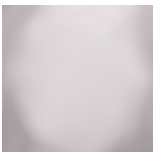
Halcyon Amber



Halcyon Blush  
Pink



Halcyon Bronze



Halcyon Clear



Halcyon Ocean  
Blue

#### Neck and Bulb Holder



Brushed  
Bronze



Brushed Gold



Brushed Nickel

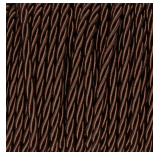
#### Recommended Shade(s) (OPTIONAL)

12" Tall Drum

#### Silk Flex



Black



Brown



Cream



Silver

## Available Sizes

---

### One size only

TL237,

Height: 45 cm (17.72")

Diameter: 17 cm (6.69")

Bulbs: 1 x 40W E27

Net Weight: 4 kg / 9 lb Cable Exit:  
Bottom

Dimensions are measured from the base of the lamp to the middle of the bulb holder and are excluding shade

The overall height with a 12" tall drum shade 70cm - 27.5"

Finish note: As these glass lamps are handmade by our artisans in England, they may vary slightly from piece to piece in dimension and appearance