

# BELLA FIGURA

## Fairmont Lamp

**TL289**

Collection Name

**ART DECO COLLECTION**

A beautiful table lamp in cast and polished Lucite with a stepped brass base. This table lamp is inspired by a 1930's original Art Deco design from our archive.

Required modifications for use on yachts - lacquer applied to all metal components with the cable exit through bottom of the base.

### Test Certification

IEC (International Electrotechnical Commission) test certificates available - will incur a surcharge  
UL (Underwriters Laboratories) test certificates available for the USA - will incur a surcharge  
Suitable for Yachts - Rod and bolting available for use on yachts

### Compatible with



Yacht Club



TL289 in Clear and Bronze with a 11" Tall Drum in Silk Crepe Satin 1806W-310 Timber Wolf

### Available Finishes

#### Lucite Finish



Clear Lucite Rods



Frosted Lucite Rods

#### Metal Finish



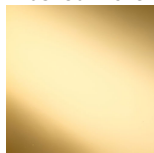
Brushed Nickel



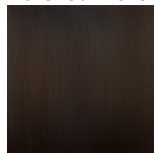
Polished Nickel



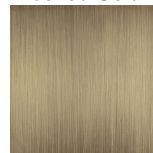
Brushed Gold



Polished Gold



Bronze



Brushed  
Bronze

#### Recommended Shade(s) (OPTIONAL)



11" Tall Drum

**Silk Flex**



Black



Cream



Silver



Brown

## Available Sizes

---

### One Size Only

TL289,

Height: 47 cm (18.5")

Width: 13 cm (5.12")

Bulbs: 1 x 40W E27

Net Weight: 5 kg / 11 lb Cable Exit:

Bottom

Dimensions are measured from the base of the lamp to the middle of the bulb holder and are excluding shade.

Overall height with an 11"• tall drum shade 76cm - 30"•

Shades can also be made with Customer Own Material (COM)