

BELLA FIGURA

Rille Lamp

TL160E

Collection Name

CANTERBURY COLLECTION

Rille draws its name from the term first introduced by German astronomer, Johann Schröter, that describes the channels found scored into the moon's surface. The exaggerated furrows on this lamp allow the four new glazes to play on the surface and deliver an enchanting contrast between light and dark.

Test Certification

IEC (International Electrotechnical Commission) test certificates available - will incur a surcharge
UL (Underwriters Laboratories) test certificates available for the USA - will incur a surcharge
Suitable for Yachts - Rod and bolting available for use on yachts

Compatible with



Express



TL160 in Earl Grey and Old English Brass with 13" Tall Drum Shade in James Hare Vienne Silk Chalk 31458/01

Available Finishes

Ceramic Finish



Chalk



Jasper

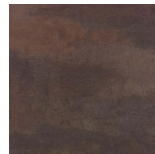


Earl Grey

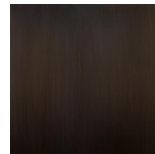
Metal Finish



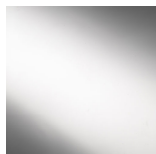
Polished Brass



Old English Brass



Bronze



Polished Nickel

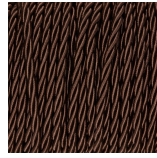
Recommended Shade(s) (OPTIONAL)

13" Tall Drum

Silk Flex



Black



Brown



Cream



Silver

Available Sizes

One Size

TL160,

Height: 43 cm (16.93")

Diameter: 25.5 cm (10.04")

Bulbs: 1 x 40W E27

Net Weight: 3 kg / 7 lb Cable Exit:

Bottom

Dimensions are measured from the base of the lamp to the middle of the bulb holder and are excluding shade

Overall height with recommended 13" tall drum shade is 73cm

Shades are also available in Customer Own Material (COM)