

# BELLA FIGURA

## Tesoro Chandelier

**CL645**

Collection Name

**MODERN MURANO COLLECTION**

A stunning ceiling light with a metal frame and strings of hand-made, irregular Murano glass drops in a variety of colour combinations. The G9 bulbs are fitted inside custom-made glass covers with a satin finish, which give a beautifully soft light.

### Test Certification

IEC (International Electrotechnical Commission) test certificates available - will incur a surcharge  
UL (Underwriters Laboratories) test certificates available for the USA - will incur a surcharge



CL645-85 in Clear and Amber Murano Glass and Gold Leaf

### Available Finishes

#### Metal Finish



Gold Leaf

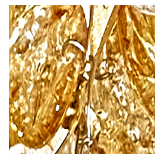
#### Murano Glass Finish



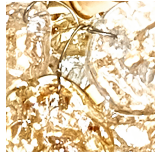
Clear & Amber



Clear & Black



Tesoro Amber



Tesoro Clear



White & Clear

## Available Sizes

---

### Size One

CL645-85,

Height: 55 cm (21.65")

Diameter: 85 cm (33.46")

Bulbs: 8 x 25W or 4W G9 or G9

LED

Net Weight: 18 kg / 40 lb

### Size Two

CL645-120,

Height: 60 cm (23.62")

Diameter: 120 cm (47.24")

Bulbs: 12 x 25W or 4W G9 or G9

LED

Net Weight: 30 kg / 66 lb

### Size Three

CL645-140,

Height: 60 cm (23.62")

Width: 90 cm (35.43")

Length: 140 cm (55.12")

Bulbs: 10 x 25W or 4W G9 or G9

LED

Net Weight: 22 kg / 49 lb

The height dimensions do not include support cables. Standard cable length is 100cm "" this can be adjusted/reduced on site.

Please note the hand finished nature of the 'leafing' process means the end result is a raw and organic looking finish - highlighting the unique, 'made to order' qualities of our artisan crafted product.