

BELLA FIGURA

Sol Chandelier

CL804

Collection Name

VEGA COLLECTION

For centuries, the sun has been depicted as a radiant circle encircled by delicate rays, a universal emblem of warmth and light. Sol, named after the ancient sun god, reimagines this timeless motif in a contemporary form. From a central core, elegant arms extend outward, each crowned with a flared shade of hand-blown glass. Designed with understated sophistication, Sol offers a joyful, luminous presence, perfectly proportioned for spaces with lower ceilings.

Compatible with



Bathroom



CL804-100 in Satin Glass and Brushed Bronze

Available Finishes

Glass Finish



Satin Triangular

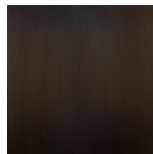
Metal Finish



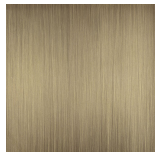
Brushed Gold



Brushed Nickel



Bronze



Brushed
Bronze

Available Sizes

Size One

CL804-75,
Height: 8.6 cm (3.39")
Diameter: 75 cm (29.53")
Bulbs: 9 × 2.5W G9 LED
Net Weight: 16 kg / 35 lb

Size Two

CL804-100,
Height: 8.6 cm (3.39")
Diameter: 100 cm (39.37")
Bulbs: 12 × 2.5W G9 LED
Net Weight: 21 kg / 46 lb

Size Three

CL804-125,
Height: 8.6 cm (3.39")
Diameter: 125 cm (49.21")
Bulbs: 15 × 2.5W G9 LED
Net Weight: 27 kg / 60 lb

The dimensions of the central supporting rod and ceiling rose are not included in the height measurements.

The standard rod and ceiling rose is 50cm (20") high if not otherwise specified by the customer.

This design can be made in custom sizes.

Please Note: Our chandeliers are not supplied with ceiling hooks. The ceiling rose, chain and rod specification will differ dependent on the weight of the chandelier. A qualified electrician must assess your ceiling structure and advise on the right fitting.