

# BELLA FIGURA

## Small Double Drum Oval Chandelier

**CL443-SM-O**

Collection Name

**RETRO MURANO COLLECTION**

A celebration of light and sophistication, the Small Double Drum Oval Chandelier exudes understated glamour. Twin oval shades gently diffuse a warm, inviting glow, while subtle metallic accents introduce a whisper of sparkle, catching the eye from every angle. Its elegant, balanced silhouette complements both contemporary and classic interiors, creating a luminous focal point that enhances dining rooms, hallways, or lounges. With a thoughtfully reduced drop, the design is perfectly suited to spaces with lower ceiling heights, ensuring versatility without compromise. A harmonious blend of refined design and discreet glitz, this chandelier embodies the perfect marriage of poise and glamour.

### Test Certification

UL (Underwriters Laboratories) test certificates available for the USA - will incur a surcharge  
IEC (International Electrotechnical Commission) test certificates available - will incur a surcharge

### Compatible with



Bathroom



CL443-SM-O-150 in Clear Crackled and Brushed Dark Bronze

### Available Finishes

#### Metal Finish



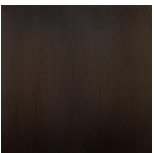
Brushed  
Bronze



Brushed Nickel



Brushed Gold



Bronze

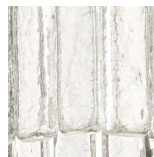
#### Murano Glass Finish



Clear Flat  
Triangular



Smoke Flat  
Triangular



Clear Crackled  
(Flat)



Satin Flat  
Triangular

Available Sizes

---

**Size One**

CL443-SM-O-150,  
Height: 21 cm (8.27")  
Width: 150 cm (59.06")  
Depth: 65 cm (25.59")  
Bulbs: 16 x 2.5W G9

**Size Two**

CL443-SM-O-200,  
Height: 21 cm (8.27")  
Width: 200 cm (78.74")  
Depth: 86 cm (33.86")  
Bulbs: 22 x 2.5W G9

The dimensions of the central rod and ceiling rose are not included in the height measurements. Please add a minimum of 15cm (6") to the height to take this into account. The standard rod and ceiling rose height is 50cm (20") if not otherwise specified by customer.