

BELLA FIGURA

Ruffle Chandelier

CL207-SM

Collection Name

MOONLIGHT COLLECTION

The Roaring Twenties brought a break with tradition marked by great advances in design, the essence of which can be seen in the flamboyant fashion updates of the era. Ladies were adorned in extravagant and dazzling dresses with intricate beading and shimmering sequins. It was this elaborate embellishment that led us to imagine the smaller of the Ruffle ceiling light family, abundant with overlapping plates of gently waving satin glass, each completed by a spherical finial at its centre in a finish of your choosing.

Compatible with



Bathroom



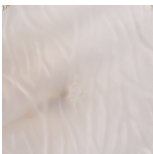
Yacht Club



CL207-SM-100 in Satin and Brushed Bronze

Available Finishes

Glass Finish



Ruffle Satin

Metal Finish



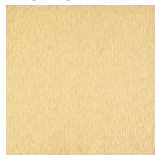
Brushed
Bronze



Brushed Nickel



Polished
Nickel



Brushed Gold



Polished Gold

Available Sizes

Size One

CL207-SM-75,

Height: 34.5 cm (13.58")

Diameter: 75 cm (29.53")

Bulbs: 6 x 2.5W LED Net Weight:

12 kg / 27 lb

Size Two

CL207-SM-100,

Height: 34.5 cm (13.58")

Diameter: 100 cm (39.37")

Bulbs: 8 x 2.5W LED Net Weight:

18 kg / 40 lb

Size Three

CL207-SM-125,

Height: 34.5 cm (13.58")

Diameter: 125 cm (49.21")

Bulbs: 12 x 2.5W LED G9

Net Weight: 25 kg / 55 lb

The dimensions of the central supporting rod and ceiling rose are not included in the height measurements.

The standard rod and ceiling rose is 50cm (20") high if not otherwise specified by the customer.

Weights are approx.

Finish note: As the glass is handmade by our artisans, they may vary slightly from piece to piece in dimension and appearance