

# BELLA FIGURA

## Pyrus Lamp

TL162E

Collection Name

**CONTOUR COLLECTION**

The fruit from the tree of the Pyrus genus – the humble pear, the perfect name for our latest ceramic design. Curvaceous but sleek, our Pyrus lamp renews this classic pear shape, creating a chic outline for superior interior styling. Illuminated by six new glossy glazes, this piece is as versatile as it is vivacious.

**Compatible with**



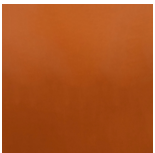
Express



TL162 in Admiral Blue and Polished Nickel with 13" Tall Drum Shade in James Hare Vienne Silk Chalk 31458/01

### Available Finishes

#### Ceramic Finish



Tabasco



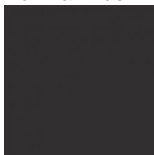
Admiral Blue



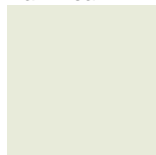
Dark Teal



Mustard



Beluga



Parchment

#### Neck and Bulb Holder



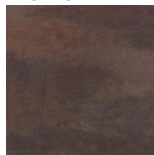
Bronze



Polished Brass



Polished Nickel

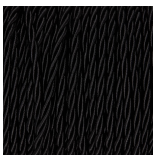


Old English  
Brass

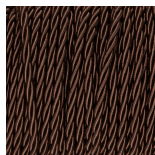
#### Recommended Shade(s) (OPTIONAL)

13" Tall Drum

#### Silk Flex



Black



Brown



Cream



Silver

## Available Sizes

---

### One Size

TL162,

Height: 56 cm (22.05")

Diameter: 30 cm (11.81")

Bulbs: 1 x 40W E26

Net Weight: 3 kg / 7 lb Cable Exit:

Bottom

Dimensions are measured from the base of the lamp to the middle of the bulb holder and are excluding shade

Overall height with recommended 13" tall drum shade is 85.5cm

Shades are also available in Customer Own Material (COM)