

BELLA FIGURA

Pyrus Lamp

TL162

Collection Name

CONTOUR COLLECTION

The fruit from the tree of the Pyrus genus – the humble pear, the perfect name for our latest ceramic design. Curvaceous but sleek, our Pyrus lamp renews this classic pear shape, creating a chic outline for superior interior styling. Illuminated by six new glossy glazes, this piece is as versatile as it is vivacious.



TL162 in Mustard and Polished Brass with 13" Tall Drum Shade in James Hare Vienne Silk Chalk 31458/01

Available Finishes

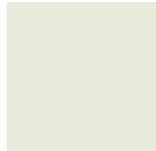
Ceramic Colours



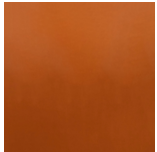
Admiral Blue



Mustard



Parchment



Tabasco



Dark Teal



Beluga

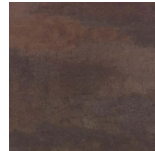
Metal Finishes



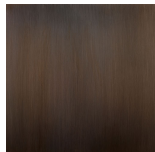
Polished Brass



Polished Nickel

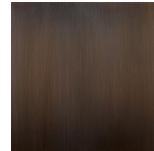


Old English Brass



Bronze

Neck and Bulb Holder



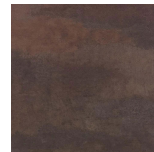
Bronze



Polished Brass

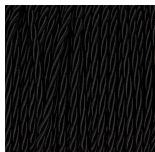


Polished Nickel



Old English Brass

Silk Flex Choice



Black



Brown



Cream



Silver

Available Sizes

One Size

TL162,

Height: 56 cm (22.05")

Diameter: 30 cm (11.81")

1 E27

Net Weight: 3 kg / 7 lb

Dimensions are measured from the base of the lamp to the middle of the bulb holder and are excluding shade

Overall height with recommended 13" tall drum shade is 85.5cm

Shades are also available in Customer Own Material (COM)