

# BELLA FIGURA

## Orbis Pendant

### CL854-PEN

Collection Name  
**ANIMA COLLECTION**

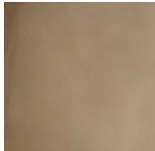
The Orbis pendant lights combine timeless sophistication with modern artistry. Featuring meticulously crafted glass spheres with a beautiful inner glass globe design feature, inspired by celestial orbits and the beauty of planetary motion, the Orbis Pendant evokes a sense of weightless elegance, with its luminous glass spheres appearing to float effortlessly. These pendants are available in three finishes: Olive, Cacao, and Clear. The pendants embody the perfect balance of design and functionality, making them an exceptional addition to any décor. Whether suspended individually for understated elegance or clustered together to create a dramatic statement, the Orbis Pendants radiate a warm and inviting glow. Perfect for living areas, dining spaces, or grand entrances, they add a contemporary touch while enhancing the atmosphere of any interior.



CL854-PEN in Cacao and Brushed Bronze

### Available Finishes

#### Glass Finish



Cacao (Orbis)



Clear



Olive (Orbis)

#### Metal Finish



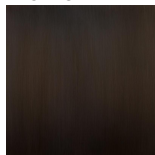
Brushed  
Bronze



Brushed Nickel



Brushed Gold



Bronze

## Available Sizes

---

### Size One

CL854-PEN,

Height: 40 cm (15.75")

Diameter: 40 cm (15.75")

Bulbs: 1 x 5W E14

Net Weight: 7 kg / 15 lb

The dimensions of the central rod and ceiling rose are not included in the height measurements.

The standard rod and ceiling rose height is 50cm (20") if not otherwise specified by customer.

Minimum standard rod height is 20cm and maximum is 100cm. Please enquire for heights exceeding 100cm.

Please Note: Our chandeliers are not supplied with ceiling hooks. The ceiling rose, chain and rod specification will differ dependent on the weight of the chandelier. A qualified electrician must assess your ceiling structure and advise on the right fitting.