

# BELLA FIGURA

## Optic Lamp

TL825

Collection Name  
**VEGA COLLECTION**

Named in reference to the starburst rays of light which crown stars in astrophotography, the birds eye view of our Optic table lamp reveals a superb structure which visually represents these light optics. Viewed from the side the visual concept which inspired this design is totally disguised, but this new dimension offers a totally unique play on the original inspiration and gives a transitional look as the ceramic fins carve out a traditional shape in an ultra-modern style. A triumph of this collection, the Optic table lamp makes a convincing entrance to our collection in three statement looks; Chalk, Jasper and Oil.

Required modifications for use on yachts - lacquer applied to all metal components, "sea rod" through centre to secure base to surfaces, with the cable exit through bottom of the base.



TL825 in Oil and Polished Nickel with 14" Tall Drum Shade in Bennett's Dupion Silk  
Hint of Pink 5018/50X

### Compatible with



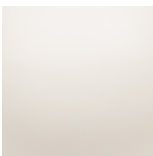
Express



Yacht Club

### Available Finishes

#### Ceramic Finish



Chalk

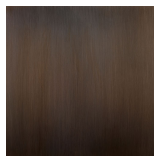


Jasper

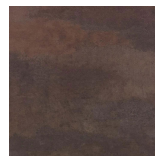


Oil

#### Neck and Bulb Holder



Bronze



Old English  
Brass



Polished Brass



Polished Nickel

#### Recommended Shade(s) (OPTIONAL)



14" Tall Drum

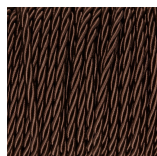
# Silk Flex



Black



Cream



Brown



Silver

## Available Sizes

---

### Size One

TL825,

Height: 54.8 cm (21.57")

Diameter: 31.5 cm (12.4")

Bulbs: 1 × 40W E27

Cable Exit: Bottom

Dimensions are measured from the base of the lamp to the middle of the bulb holder and are excluding shade.

Overall height with recommended 14" tall drum shade is 87.8cm - 35.6"