

# BELLA FIGURA

## Mela Lamp

TL163

Collection Name

**CONTOUR COLLECTION**

The Mela table lamp, which takes its name from the Italian word for 'apple', is a rejuvenation of the traditional urn shape with six new finishes to adorn its voluptuous form. This creation is truly the apple of our eye.



TL163 in Admiral Blue and Polished Nickel with 16" Melton Shade in Bennett's Dupion Silk Ivory 5018W/91

### Available Finishes

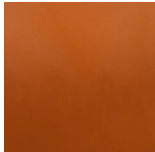
#### Ceramic Colours



Parchment

Admiral Blue

Dark Teal



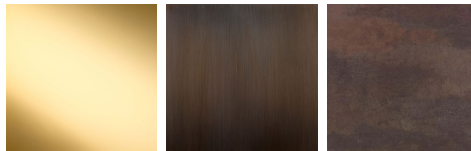
Tabasco

Mustard

Beluga



#### Metal Finishes



Polished Brass

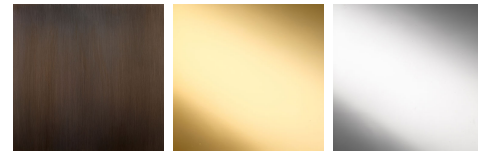
Bronze

Old English  
Brass



Polished  
Nickel

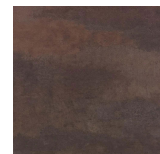
#### Neck and Bulb Holder



Bronze

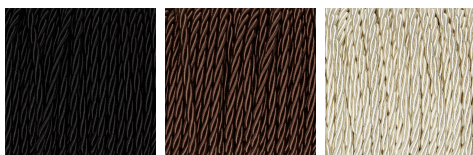
Polished Brass

Polished  
Nickel



Old English  
Brass

#### Silk Flex Choice



Black

Brown

Cream



Silver

## Available Sizes

---

### One Size

TL163,

Height: 48.5 cm (19.09")

Diameter: 26 cm (10.24")

1 x 40 E27

Max Watt and Lamps: 40 x 1

Net Weight: 4 kg / 8.8 lb

Dimensions are measured from the base of the lamp to the middle of the bulb holder and are excluding shade

Overall height with recommended 16" melton shade is 71cm

Shades are also available in Customer Own Material (COM)