

# BELLA FIGURA

## Mela Lamp

TL163E

Collection Name

**CONTOUR COLLECTION**

The Mela table lamp, which takes its name from the Italian word for 'apple', is a rejuvenation of the traditional urn shape with six new finishes to adorn its voluptuous form. This creation is truly the apple of our eye.

**Compatible with**



Express



TL163 in Mustard and Polished Brass with 16" Melton Shade in Bennett's Dupion Silk Ivory 5018W/91

### Available Finishes

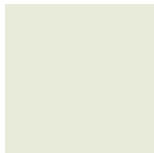
#### Ceramic Finish



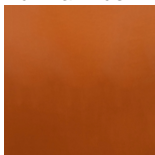
Admiral Blue



Dark Teal



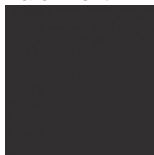
Parchment



Tabasco

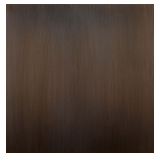


Mustard



Beluga

#### Neck and Bulb Holder



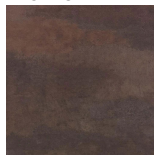
Bronze



Polished Brass



Polished Nickel



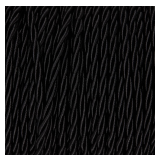
Old English  
Brass

#### Recommended Shade(s) (OPTIONAL)

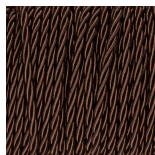


16" Melton

#### Silk Flex



Black



Brown



Cream



Silver

## Available Sizes

---

### One Size

TL163,

Height: 48.5 cm (19.09")

Diameter: 26 cm (10.24")

Bulbs: 1 x 40W E27

Net Weight: 4 kg / 8.8 lb Cable

Exit: Bottom

Dimensions are measured from the base of the lamp to the middle of the bulb holder and are excluding shade

Overall height with recommended 16" melton shade is 71cm

Shades are also available in Customer Own Material (COM)