

BELLA FIGURA

Mela Lamp

TL163

Collection Name

CONTOUR COLLECTION

The Mela table lamp, which takes its name from the Italian word for 'apple', is a rejuvenation of the traditional urn shape with six new finishes to adorn its voluptuous form. This creation is truly the apple of our eye.

Compatible with



Express



TL163 in Mustard and Polished Brass with 16" Melton Shade in Bennett's Dupion Silk Ivory 5018W/91

Available Finishes

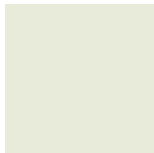
Ceramic Finish



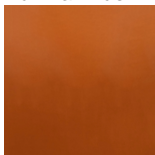
Admiral Blue



Dark Teal



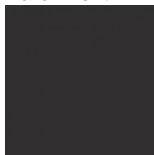
Parchment



Tabasco



Mustard



Beluga

Neck and Bulb Holder



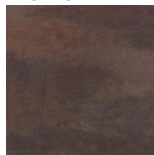
Bronze



Polished Brass



Polished Nickel



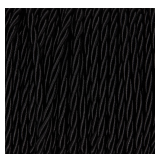
Old English
Brass

Recommended Shade(s) (OPTIONAL)

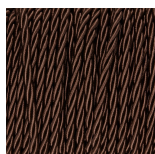


16" Melton

Silk Flex



Black



Brown



Cream



Silver

Available Sizes

One Size

TL163,

Height: 48.5 cm (19.09")

Diameter: 26 cm (10.24")

Bulbs: 1 x 40W E27

Net Weight: 4 kg / 8.8 lb Cable

Exit: Bottom

Dimensions are measured from the base of the lamp to the middle of the bulb holder and are excluding shade

Overall height with recommended 16" melton shade is 71cm

Shades are also available in Customer Own Material (COM)