

# BELLA FIGURA

## Halley Lamp

TL820

Collection Name

**VEGA COLLECTION**

The Halley table lamp is a stylised impression of the most famous comet to grace our skies, Halley's comet. This comet is a rare thing to behold but with a famous reputation for its everlasting presence. To honour 'Halley' honestly was to create a design that would stand the test of time, something that answers to both traditional and modern tastes in one and is in effect timeless.

### Compatible with



Express



Yacht Club



TL820 in Dolomite and Old English Brass with 14" Tall Drum Shade in Bennett's Dupion Silk Hint of Pink 5018W/50X

### Available Finishes

#### Ceramic Finish



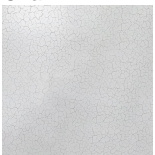
Chalk



Dolomite

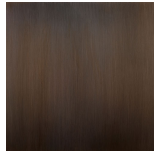


Oil

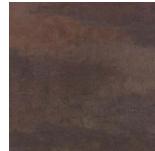


Crackle

#### Neck and Bulb Holder



Bronze



Old English Brass



Polished Brass



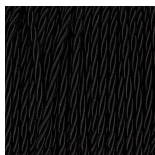
Polished Nickel

#### Recommended Shade(s) (OPTIONAL)



14" Tall Drum

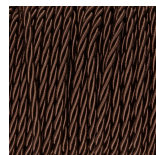
#### Silk Flex



Black



Cream



Brown



Silver

## Available Sizes

---

### Size One

TL820,

Height: 50.3 cm (19.8")

Width: 28 cm (11.02")

Depth: 28 cm (11.02")

Bulbs: 1 x 40W E27

Cable Exit: Bottom

Dimensions are measured from the base of the lamp to the middle of the bulb holder and are excluding shade.

Overall height with recommended 14" tall drum shade is 83.3cm - 32.8"