

BELLA FIGURA

Eyre Lamp

TL235

Collection Name

HALCYON COLLECTION

Indigenously known as Kati-Thanda, Lake Eyre is usually cinder dry, the lakebed blanketed by a patchwork of tessellating salt segments, as reflected by the scalloped surface of our Eyre table lamp. Of the 5 new colourways, Blush Pink is of particular note - an emulation of the natural phenomenon which takes place when the lake is flooded, bringing a flourish of salt-loving algae and halobacterium who turn the waters a brilliant pink. **IMPORTANT NOTE** - Bronze and blush pink glass finishes are currently only available in singles.

Compatible with



Express



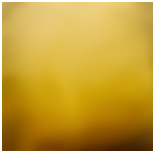
Yacht Club



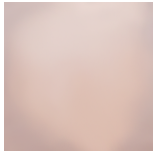
TL235 in Blush Pink Glass and Brushed Brass with an 11" Tall Drum Shade in (COM) Zoffany Cybelle Buff 332735

Available Finishes

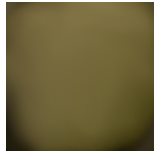
Glass Finish



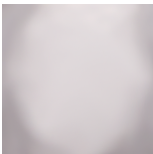
Halcyon Amber



Halcyon Blush Pink



Halcyon Bronze



Halcyon Clear



Halcyon Ocean Blue

Neck and Bulb Holder



Brushed Nickel



Brushed Bronze



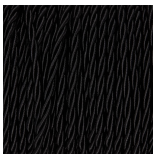
Brushed Gold

Recommended Shade(s) (OPTIONAL)

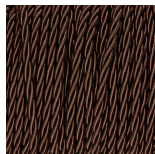


11" Tall Drum

Silk Flex



Black



Brown



Cream



Silver

Available Sizes

One size only

TL235,

Height: 37.5 cm (14.76")

Width: 20.5 cm (8.07")

Depth: 16.5 cm (6.5")

Bulbs: 1 x 40W E27

Net Weight: 4 kg / 9 lb Cable Exit:

Bottom

Dimensions are measured from the base of the lamp to the middle of the bulb holder and are excluding shade

The overall height with a 11" tall drum shade 62cm - 24.5"

Finish note: As these glass lamps are handmade by our artisans in England, they may vary slightly from piece to piece in dimension and appearance