

# BELLA FIGURA

## Diamond Round Small Lamp

TL710-SME

Collection Name

**BEVERLY HILLS COLLECTION**

A stunning new table lamp, which is hand-made out of layer upon layer of Murano Glass and hand-polished for up to 12 hours to create the perfect faceted ball shape. Elegant and timeless beautiful.

### Compatible with



Express



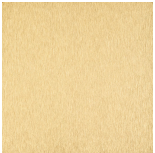
Yacht Club



TL710-SM in Forest Green & Clear and Brushed Nickel with a 9" Tall Drum Shade in Bennett Silks Dupion Silk 5018W-1094 Bronze

### Available Finishes

#### Metal Finish

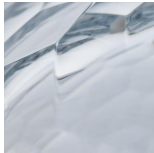


Brushed Gold

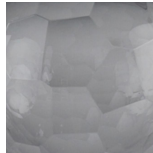


Brushed Nickel

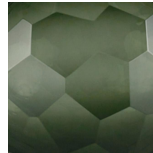
#### Murano Glass Finish



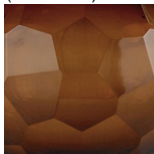
Clear  
(Pendant)



Slate (Round)



Forest Green  
(Round)

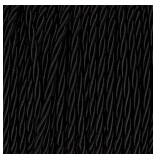


Tobacco  
(Round)

#### Recommended Shade(s) (OPTIONAL)

9" Tall Drum

#### Silk Flex



Black



Brown



Cream



Silver

## Available Sizes

---

### Small

TL710-SM,  
Height: 27.5 cm (10.83")  
Diameter: 19 cm (7.48")  
Bulbs: 1 × 40W E27  
Cable Exit: Top

### Large

TL710-LA,  
Height: 36 cm (14.17")  
Diameter: 28.5 cm (11.22")  
Bulbs: 1 × 40W E27  
Cable Exit: Top

Dimensions are measured from the base of the lamp to the middle of the bulb holder and are excluding shade

Overall height with a 9" Tall Drum shade 46.6cm - 18.3"

Shades are also available in Customer Own Material (COM)

\*Please note, due to our Diamond table lamps being individually hand made and each one being unique, there may be slight variations in colour\*

All our Diamond lamps are top wired (French Wired)