

# BELLA FIGURA

## Diamond Round Large Lamp

TL710-LAE

Collection Name

**BEVERLY HILLS COLLECTION**

A stunning new table lamp, which is hand-made out of layer upon layer of Murano Glass and hand-polished for up to 12 hours to create the perfect faceted ball shape. Elegant and timelessly beautiful.

**Compatible with**



Express



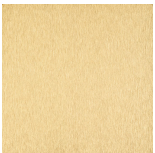
Yacht Club



TL710-LA in Clear and Brushed Gold with 12" Tall Drum in Bennett's 5018W-52 Black Dupion

### Available Finishes

#### Metal Finish

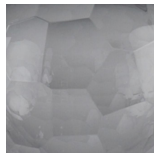


Brushed Gold

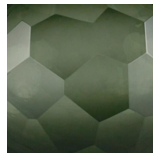


Brushed Nickel

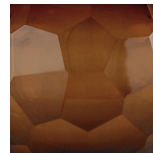
#### Murano Glass Finish



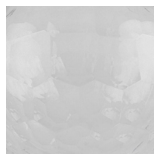
Slate (Round)



Forest Green  
(Round)



Tobacco  
(Round)

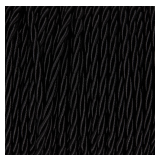


Clear (Round)

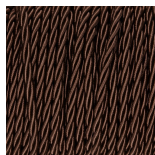
#### Recommended Shade(s) (OPTIONAL)

12" Tall Drum

#### Silk Flex



Black



Brown



Cream



Silver

## Available Sizes

---

**Small**  
TL710-SM,  
Height: 27.5 cm (10.83")  
Diameter: 19 cm (7.48")  
Bulbs: 1 × 40W E27  
Cable Exit: Top

**Large**  
TL710-LA,  
Height: 36 cm (14.17")  
Diameter: 28.5 cm (11.22")  
Bulbs: 1 × 40W E27  
Cable Exit: Top

Dimensions are measured from the base of the lamp to the middle of the bulb holder and are excluding shade

Overall height with a 12" Tall Drum shade 63.8cm - 25.1"

Shades are also available in Customer Own Material (COM)

\*Please note, due to our Diamond table lamps being individually hand made and each one being unique, there may be slight variations in colour\*

All our Diamond lamps are top wired (French Wired)