

BELLA FIGURA

Diamond Round Large Lamp

TL710-LA

Collection Name

BEVERLY HILLS COLLECTION

A stunning new table lamp, which is hand-made out of layer upon layer of Murano Glass and hand-polished for up to 12 hours to create the perfect faceted ball shape. Elegant and timelessly beautiful.

Compatible with



Express



Yacht Club



TL710-LA in Tobacco and Brushed Gold with a 12" Tall Drum in Bennett's 5018W-127 Raisin

Available Finishes

Metal Finish

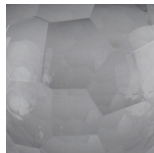


Brushed Gold

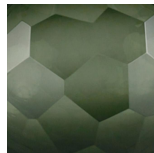


Brushed Nickel

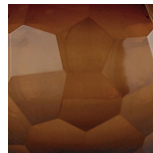
Murano Glass Finish



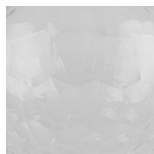
Slate (Round)



Forest Green
(Round)



Tobacco
(Round)

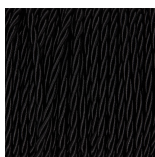


Clear (Round)

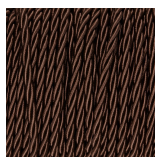
Recommended Shade(s) (OPTIONAL)

12" Tall Drum

Silk Flex



Black



Brown



Cream



Silver

Available Sizes

Small
TL710-SM,
Height: 27.5 cm (10.83")
Diameter: 19 cm (7.48")
Bulbs: 1 x 40W E27
Cable Exit: Top

Large
TL710-LA,
Height: 42 cm (16.54")
Diameter: 28.5 cm (11.22")
Bulbs: 1 x 40w E27
Cable Exit: Top

Dimensions are measured from the base of the lamp to the middle of the bulb holder and are excluding shade

Overall height with a 12" Tall Drum shade 63.8cm - 25.1"

Shades are also available in Customer Own Material (COM)

Please note, due to our Diamond table lamps being individually hand made and each one being unique, there may be slight variations in colour

All our Diamond lamps are top wired (French Wired)