

BELLA FIGURA

Cypress Pendant

CL236-PEN

Collection Name
HALCYON COLLECTION

Inspired by the Mighty Bald Cypress tree, this pendant encapsulates stalwart stature and tranquil beauty. Like its arboreal muse deeply rooted in the mangrove, the pendant emanates an aura of serenity. Its rounded form pays homage to the Cypress's regal shape, while hand-carved glass furrows, delicately acid dipped for a frosted effect, mirror the tree's intricate root system. This pendant is a testament to nature's artistry, a luminary that exudes both understated elegance and captivating radiance, gracing any space it illuminates with a touch of enchantment.

Compatible with



Express



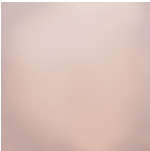
Bathroom



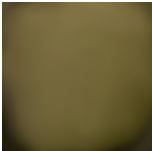
CL236-PEN in Clear and Brushed Nickel

Available Finishes

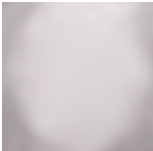
Glass Finish



Halcyon Blush
Pink



Halcyon
Bronze



Halcyon Clear

Metal Finish



Brushed
Bronze



Brushed Gold



Brushed Nickel

Available Sizes

Size One

CL236-PEN,

Height: 22 cm (8.66")

Diameter: 27 cm (10.63")

Bulbs: 1 x 25W E14

Dimmable

Net Weight: 4 kg / 9 lb

The dimensions of the central rod and ceiling rose are not included in the height measurements. The standard rod and ceiling rose height is 50cm (20") if not otherwise specified by customer.

Minimum rod height is 20cm and maximum is 100cm. Please enquire for heights exceeding 100cm.

Finish note: Due to the nature of our hand made product our finishes can vary from piece to piece. Please be aware studio lighting can affect tone of metals and alter material appearance slightly. For more details, speak to your sales advisor who may be able to organise sampling upon request.