

BELLA FIGURA

Curzon Street Pendant

CL121-PEN

Collection Name

MAYFAIR COLLECTION

Modelled on our iconic Curzon Street chandelier the new Curzon Street pendant is a welcome addition to the range. With its long, slender design this would look elegant and chic in any given interior. Available in either clear or frosted Lucite and a number of sizes.



CL121-PEN-12 in Clear Lucite and Brushed Gold

Available Finishes

Lucite Colours



Clear Lucite
Rods



Frosted Lucite
Rods

Metal Finishes



Brushed Gold



Brushed Nickel



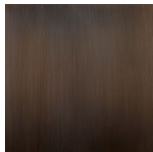
Polished Gold



Polished
Nickel



Antique
Brushed Brass



Bronze

Available Sizes

Size One

CL121-PEN-10,
Height: 40 cm (15.75")
Diameter: 10 cm (3.94")
1 x 40w E27
Max Watt and Lamps: 40w x 1
Net Weight: 5 kg / 11 lb

Size Two

CL121-PEN-12,
Height: 40 cm (15.75")
Diameter: 12.5 cm (4.92")
1 x 40w E27
Max Watt and Lamps: 40w x 1
Net Weight: 5 kg / 11 lb

Size Three

CL121-PEN-14,
Height: 40 cm (15.75")
Diameter: 14.5 cm (5.71")
1 x 40w E27
Max Watt and Lamps: 40w x 1
Net Weight: 6 kg / 13 lb

Size Four

CL121-PEN-16,
Height: 40 cm (15.75")
Diameter: 16.5 cm (6.5")
1 x 40w E27
Max Watt and Lamps: 40w x 1
Net Weight: 8 kg / 18 lb

The dimensions of the supporting rod and ceiling rose are not included in the height measurements.

The standard rod and ceiling rose are 50cm (20") high from the top of the pendant, if not otherwise specified by the client.