

# BELLA FIGURA

## Concertina Straight Mirror

**M114-S**

Collection Name

**REFLECT COLLECTION**

A more contemporary piece designed in a distressed bronze finish from the brutalist era of the 1970s. Encompassing the glass is a multitude of brass v-shaped strips welded together to create a subtle lighting effect.

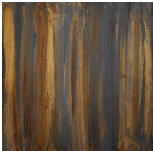


Concertina Straight Mirror in Distressed Bronze

### Available Finishes

---

#### Metal Finish



Distressed Bronze

Available Sizes

---

**Size One**

M114-S,

Diameter: 115 cm (45.28")

Depth: 3.9 cm (1.54")

Net Weight: 40 kg / 88 lb