

# BELLA FIGURA

## Dahlia Chandelier

**CL461**

Collection Name

**RETRO MURANO COLLECTION**

Combining modernity with classic design and elegance, the new Dahlia chandelier is a more contemporary take on its predecessor the Petal chandelier. Inspired by the delicate petals that adorn the opulent Dahlia flower, each piece of glass hangs beautifully from the ceiling frame in either smoke, satin or clear Murano glass.

### Test Certification

IEC (International Electrotechnical Commission) test certificates available - will incur a surcharge  
UL (Underwriters Laboratories) test certificates available for the USA - will incur a surcharge

### Compatible with



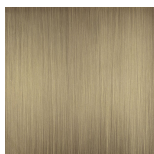
Bathroom



CL461-45 in Satin and Brushed Bronze

### Available Finishes

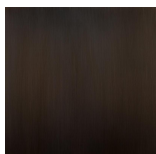
#### Metal Finish



Brushed  
Bronze



Brushed Nickel



Bronze

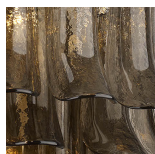


Brushed Gold

#### Murano Glass Finish



Satin Dahlia  
Glass



Smoke Dahlia  
Glass



Clear Dahlia  
Glass

## Available Sizes

---

### Size One

CL461-30,  
Height: 30 cm (11.81")  
Diameter: 30 cm (11.81")  
Bulbs: 1 × 40W E26  
Net Weight: 8 kg / 18 lb

### Size Two

CL461-45,  
Height: 44 cm (17.32")  
Diameter: 45 cm (17.72")  
Bulbs: 4 × 40W E26  
Net Weight: 14 kg / 31 lb

### Size Three

CL461-60,  
Height: 55 cm (21.65")  
Diameter: 60 cm (23.62")  
Bulbs: 5 × 40W Net Weight: 20 kg /  
45 lb

### Size Four

CL461-75,  
Height: 60 cm (23.62")  
Diameter: 75 cm (29.53")  
Bulbs: 7 × 40W E26  
Net Weight: 30 kg / 66 lb

### Size Five

CL461-100,  
Height: 66 cm (25.98")  
Diameter: 100 cm (39.37")  
Bulbs: 9 × 40W E27  
Net Weight: 42 kg / 93 lb

The dimensions of the central rod/chain and ceiling rose are not included in the height measurements.  
Standard rod/chain and ceiling rose is 50cm if not otherwise specified by customer.