

# BELLA FIGURA

## Garda Chandelier

**CL458**

Collection Name

**RETRO MURANO COLLECTION**

Inspired by the crystal clear waters of Lake Garda in Italy, this new elegant chandelier draws stylistic inspiration from our popular Como chandelier. A curved glass filled centre which features dozens of pear-shaped glass drops that have been crafted by hand. When lit this alluring chandelier creates a stunning glow throughout each glass drop.

### Test Certification

UL (Underwriters Laboratories) test certificates available for the USA - will incur a surcharge

### Compatible with



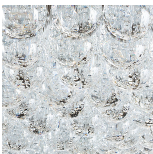
Bathroom



CL458-100 in Clear Bubbled and Polished Gold

### Available Finishes

#### Glass Finish



Pear Shaped Clear & Bubbled

#### Metal Finish



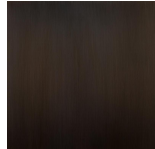
Brushed Bronze



Brushed Nickel

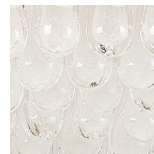


Brushed Gold



Bronze

#### Murano Glass Finish



Clear Bubbled Drops

## Available Sizes

---

### Size One

CL458-80,

Height: 31 cm (12.2")

Diameter: 80 cm (31.5")

Bulbs: 12 x 25W or LED 6W G9

G9

Net Weight: 65 kg / 143 lb

### Size Two

CL458-100,

Height: 36 cm (14.17")

Diameter: 100 cm (39.37")

Bulbs: 12 x 25W or LED 6W G9

G9

Net Weight: 105 kg / 231 lb

### Size Three

CL458-120,

Height: 46 cm (18.11")

Diameter: 120 cm (47.24")

Bulbs: 16 x 25W or LED 6W G9

G9

Net Weight: 170 kg / 375 lb

The dimensions of the central rod and ceiling rose are not included in the height measurements. Please add a minimum of 15cm (6") to the height to take this into account. The standard rod and ceiling rose height is 50cm (20") if not otherwise specified by customer.

Please note we only offer the main body of the chandelier in non polished finishes; brushed dark bronze, matt nickel and matt gold. The 'thin decorative bands' are available in both brushed and polished finishes should you wish for contrasting finishes.