

BELLA FIGURA

Small Circular Pendant

CL455

Collection Name

RETRO MURANO COLLECTION

An ultra-contemporary circular pendant, which is extremely elegant and versatile. It is ideal for use in smaller rooms or in porches and hallways instead of a more traditional lantern. It can also be used over a breakfast bar, peninsula or central island - either singularly or in groups of two or three. This pendant can also be ordered with longer or shorter glass drops.

Test Certification

IEC (International Electrotechnical Commission) test certificates available - will incur a surcharge
UL (Underwriters Laboratories) test certificates available for the USA - will incur a surcharge



CL455 in Smoke Triangular Angle Cut Glass and Brushed Gold

Available Finishes

Metal Finish



Chrome



Polished Gold



Brushed
Bronze



Brushed Gold



Brushed Nickel

Murano Glass Finish



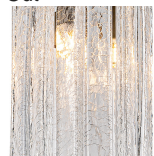
Clear
Triangular Flat
Cut



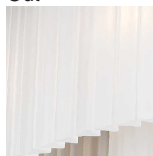
Smoke
Triangular Flat
Cut



Clear
Hammered
(Flat)



Clear Crackled
(Flat)



Satin
Triangular Flat
Cut

Available Sizes

One Size Only

CL455,

Height: 43 cm (16.93")

Diameter: 18 cm (7.09")

Bulbs: 3 × 2.5W LED G9

Net Weight: 4 kg / 9 lb

The dimensions of the central rod/chain and ceiling rose are not included in the height measurements.

The standard rod and ceiling rose is 50cm (20"), but this can be ordered in different sizes by the customer.