

BELLA FIGURA

Small Circular Pendant

CL455

Collection Name

RETRO MURANO COLLECTION

An ultra-contemporary circular pendant, which is extremely elegant and versatile. It is ideal for use in smaller rooms or in porches and hallways instead of a more traditional lantern. It can also be used over a breakfast bar, peninsula or central island - either singularly or in groups of two or three.

This pendant can also be ordered with longer or shorter glass drops.

Test Certification

IEC (International Electrotechnical Commission) test certificates available - will incur a surcharge

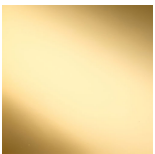
UL (Underwriters Laboratories) test certificates available for the USA - will incur a surcharge



CL455 in Clear Triangular Angle Cut Murano Glass and Brushed Nickel

Available Finishes

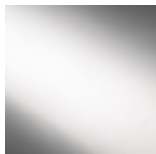
Metal Finish



Polished Gold



Brushed
Bronze



Chrome



Brushed Gold



Brushed Nickel

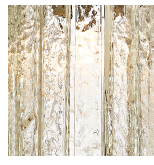
Murano Glass Finish



Clear
Triangular Flat
Cut



Smoke
Triangular Flat
Cut



Clear
Hammered
(Flat)



Satin
Triangular Flat
Cut



Clear Crackled
(Flat)

Available Sizes

One Size Only

CL455,

Height: 43 cm (16.93")

Diameter: 18 cm (7.09")

Bulbs: 3 × 2.5W LED G9

Net Weight: 8 kg / 18 lb

The dimensions of the central rod/chain and ceiling rose are not included in the height measurements

The standard rod and ceiling rose is 50cm (20"), but this can be ordered in different sizes by the customer