

BELLA FIGURA

Concave Drum Pendant

CL412-PEN

Collection Name

RETRO MURANO COLLECTION

This contemporary ceiling light is a stunning re-imagining of a classical lantern. Whether you want to give a traditional room a modern re-styling or are looking for a unique pendant to become the perfect finishing touch to any space, this fixture can be worked seamlessly into a design. Now available in both smoke, satin and clear glass with a number of metal finishes, this drum pendant with a concave centre can be tailored to your preferences.

Test Certification

UL (Underwriters Laboratories) test certificates available for the USA - will incur a surcharge

IEC (International Electrotechnical Commission) test certificates available - will incur a surcharge



CL412-25 in Clear Triangular Flat Cut Murano Glass and Polished Gold

Available Finishes

Metal Finish



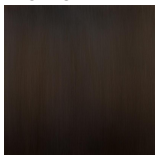
Brushed
Bronze



Brushed Nickel



Brushed Gold



Bronze

Murano Glass Finish



Clear Flat
Triangular



Smoke Flat
Triangular



Satin Flat
Triangular

Available Sizes

Size One

CL412-25,

Height: 33 cm (12.99")

Diameter: 25 cm (9.84")

Bulbs: 3 × 40w E14

Net Weight: 10 kg / 22 lb

The dimensions of the central rod and ceiling rose are not included in the height measurements.

The standard rod and ceiling rose is 50cm (20"), but this can be ordered in different sizes by the customer.