

# BELLA FIGURA

## Lunar Flush Mount Chandelier

CL213-FM

Collection Name

MOONLIGHT COLLECTION

Alternating Satin and Clear glass plates describe the cyclic waxing and waning Moon phases of which we are familiar, on our Lunar flush mount light. The style of this ceiling light is informed by archives of 1920s Murano glass chandeliers and rejuvenated by a pared down, sleek approach to its form. A highly versatile piece, we are delighted to offer this design with both Round and Rectangular frames in an array of sizes, as well as this Flush Mounted option.

### Test Certification

IEC (International Electrotechnical Commission) test certificates available - will incur a surcharge  
UL (Underwriters Laboratories) test certificates available for the USA - will incur a surcharge

### Compatible with



Bathroom



CL213-FM in Satin with Clear Glass and Brushed Bronze

### Available Finishes

#### Glass Finish



Lunar Satin with Clear

#### Metal Finish



Brushed Gold



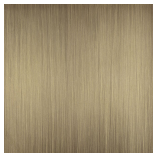
Brushed Nickel



Polished Nickel



Polished Gold



Brushed Bronze

## Available Sizes

---

### Size One

CL213-FM-50,  
Height: 23.5 cm (9.25")  
Diameter: 50 cm (19.69")  
Bulbs: 6 x 25W G9 or 4W LED G9  
G9 or LED G9  
Net Weight: 12 kg / 26 lb

### Size Two

CL213-FM-75,  
Height: 23.5 cm (9.25")  
Diameter: 75 cm (29.53")  
Bulbs: 8 x 25W G9 or 4W LED G9  
G9 or LED G9  
Net Weight: 24 kg / 53 lb

### Size Three

CL213-FM-100,  
Height: 23.5 cm (9.25")  
Diameter: 100 cm (39.37")  
Bulbs: 12 x 25W G9 or 4W LED  
G9 Net Weight: 29 kg / 64 lb

### Size Four

CL213-FM-125,  
Height: 23.5 cm (9.25")  
Diameter: 125 cm (49.21")  
Bulbs: 12 x 25W G9 or 4W LED  
G9 Net Weight: 39 kg / 86 lb

This product is a Flush Mount which means it attaches directly to the ceiling without the need for the rod or ceiling rose.