

BELLA FIGURA

Savile Row Chandelier

CL125

Collection Name

MAYFAIR COLLECTION

With a diffuser inside the bottom row of tiles, this Savile Row chandelier is comprised of a tiered frame and hand-carved Lucite. This piece incorporates both modern and traditional design to create the perfect lighting within your space. The opulent design magnificently transforms any interior and becomes a beautiful centre point

Test Certification

IEC (International Electrotechnical Commission) test certificates available - will incur a surcharge
UL (Underwriters Laboratories) test certificates available for the USA - will incur a surcharge

Compatible with



Bathroom



CL125-75 in Clear Hand-carved Lucite and Brushed Bronze

Available Finishes

Lucite Finish



Clear Hand-Carved Lucite

Metal Finish



Polished Gold



Brushed Gold



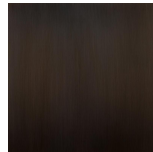
Brushed Nickel



Polished Nickel



Brushed Bronze



Bronze

Murano Glass Finish



Hammered Glass

Available Sizes

Size One

CL125-45,
Height: 18.5 cm (7.28")
Diameter: 45 cm (17.72")
Bulbs: 4 x 40W E12
Net Weight: 7 kg / 15 lb

Size Two

CL125-60,
Height: 25.5 cm (10.04")
Diameter: 60 cm (23.62")
Bulbs: 6 x 40W E26
Net Weight: 14 kg / 31 lb

Size Three

CL125-75,
Height: 32.5 cm (12.8")
Diameter: 75 cm (29.53")
Bulbs: 8 x 40W E26
Net Weight: 19 kg / 42 lb

Size Four

CL125-90,
Height: 39.5 cm (15.55")
Diameter: 90 cm (35.43")
Bulbs: 8 x 40W E26
Net Weight: 21 kg / 46 lb

Size Five

CL125-100,
Height: 49 cm (19.29")
Diameter: 100 cm (39.37")
Bulbs: 10 x 40W E26
Net Weight: 25 kg / 55 lb

Size Six

CL125-120,
Height: 53.5 cm (21.06")
Diameter: 120 cm (47.24")
Bulbs: 12 x 40W E26
Net Weight: 45 kg / 99 lb

The dimensions of the central supporting rod and ceiling rose are not included in the height measurements.

The standard rod and ceiling rose is 50cm (20") high if not otherwise specified by the customer.

Please Note: Our Chandeliers are not supplied with ceiling hooks. All of our chandeliers will mount an adequate ceiling rose, and chain/rod which will depend on the weight of the fixing. A qualified electrician must assess your ceiling structure and advise on the right fitting.