

BELLA FIGURA

Bond Street Rectangular Chandelier

CL122-RECT

Collection Name
MAYFAIR COLLECTION

The clear Lucite rods of this chandelier are mesmerising in their design and create a stylish focal point within the room. The rectangular design of this piece is unlike chandelier designs of the past and represents modern luxury at its finest. Available in varying sizes and finishes, the Bond Street chandeliers, oval, round, and rectangular, are adaptable and captivating

Required modifications for use on yachts - lacquer applied to all metal components.

Test Certification

Suitable for Yachts - Rod and bolting available for use on yachts
UL (Underwriters Laboratories) test certificates available for the USA - will incur a surcharge
IEC (International Electrotechnical Commission) test certificates available - will incur a surcharge

Compatible with



Yacht Club



CL122-RECT-150 in Clear Lucite Rods and Polished Nickel

Available Finishes

Lucite Colours



Clear Lucite
Rods



Frosted Lucite
Rods

Metal Finishes



Polished Gold



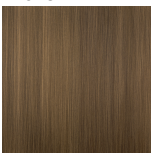
Polished
Nickel



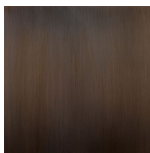
Brushed Gold



Brushed Nickel



Antique
Brushed Brass

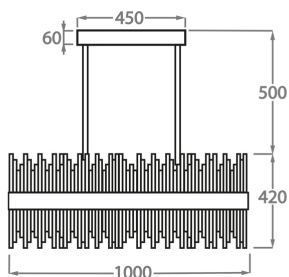


Bronze

Available Sizes

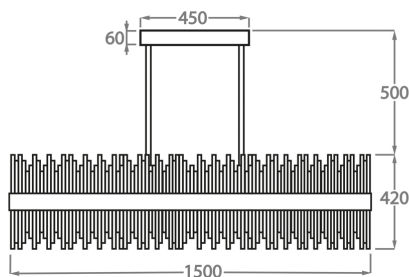
Size One

CL122-RECT-100,
Height: 42 cm (16.54")
Width: 28 cm (11.02")
Length: 100 cm (39.37")
1 x 45W LED strip
Max Watt and Lamps: 45W x 1
Net Weight: 23 kg / 51 lb



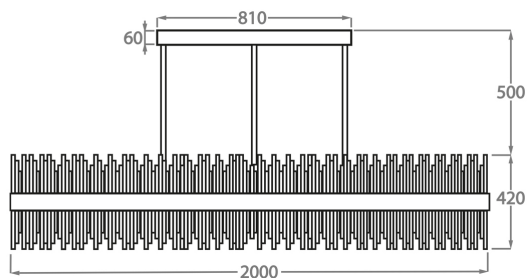
Size Two

CL122-RECT-150,
Height: 42 cm (16.54")
Width: 28 cm (11.02")
Length: 150 cm (59.06")
1 x 60W LED strip
Max Watt and Lamps: 60W x 1
Net Weight: 32 kg / 71 lb



Size Three

CL122-RECT-200,
Height: 42 cm (16.54")
Width: 28 cm (11.02")
Depth: 200 cm (78.74")
1 x 85W LED strip
Max Watt and Lamps: 85W x 1
Net Weight: 40 kg / 88 lb



Please note as standard all of our LED lights give off a warm light (3500k warm light)

The dimensions of the supporting rods and ceiling rose are not included in the height measurements.

The standard rods and ceiling rose are 50cm (20") high if not otherwise specified by the customer.