

BELLA FIGURA

Burlington Gardens 2 Chandelier

CL120-2

Collection Name

MAYFAIR COLLECTION

The latest addition to join our Mayfair collection, the Burlington Gardens 2 chandelier is a slightly modified relation of the current Burlington Gardens chandelier. Now available with slimmer clear or frosted Lucite rods. The updated design also features Lucite covers on the top and bottom of the outer ring and now comes lit with an LED band to create a soft glowing light

Required modifications for use on yachts - lacquer applied to all metal components.

Test Certification

IEC (International Electrotechnical Commission) test certificates available - will incur a surcharge
UL (Underwriters Laboratories) test certificates available for the USA - will incur a surcharge

Compatible with



Bathroom



Yacht Club



CL120-2-80 in Clear Lucite and Brushed Gold

Available Finishes

Lucite Colours



Clear Lucite
Rods



Frosted Lucite
Rods

Metal Finishes



Polished Gold



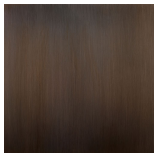
Brushed Gold



Brushed Nickel



Antique
Brushed Brass

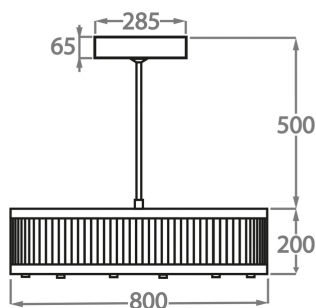


Bronze

Available Sizes

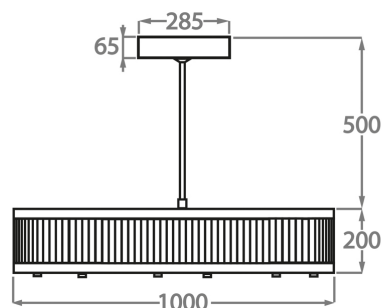
Size One

CL120-2-80,
Height: 20 cm (7.87")
Diameter: 80 cm (31.5")
LED Strip
Max Watt and Lamps: 90W
Net Weight: 30 kg / 66 lb



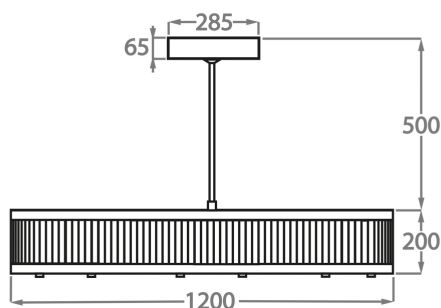
Size Two

CL120-2-100,
Height: 20 cm (7.87")
Diameter: 100 cm (39.37")
LED Strip
Max Watt and Lamps: 135W
Net Weight: 33 kg / 73 lb



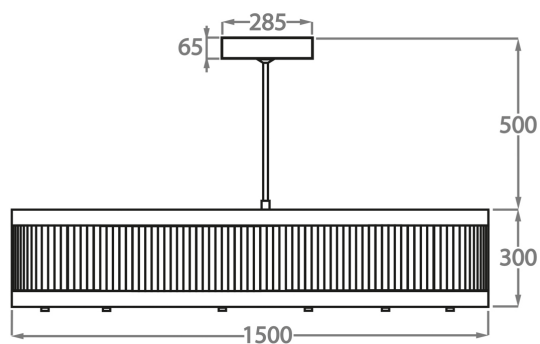
Size Three

CL120-2-120,
Height: 20 cm (7.87")
Diameter: 120 cm (47.24")
LED Strip
Max Watt and Lamps: 170W
Net Weight: 45 kg / 99 lb



Size Four

CL120-2-150,
Height: 30 cm (11.81")
Diameter: 150 cm (59.06")
LED Strip
Max Watt and Lamps: 200W
Net Weight: 58 kg / 128 lb



Please note we offer two options for our LED lit products that you can discuss with your sales advisor:

Warm White - 2700K - 2900K

Cool White - 5000K - 6000K

The dimensions of the central supporting rod and ceiling rose are not included in the height measurements

The standard rod and ceiling rose is 50cm (20") high if not otherwise specified by the customer