

# BELLA FIGURA

## Hyde Park Chandelier

**CL100-5**

Collection Name

**MAYFAIR COLLECTION**

The striking and unique drum shades of the Hyde Park chandelier are available in over 300+ silk colours, making this piece adaptable to any design. This ceiling light encapsulates the contemporary and elegant themes that are prominent throughout the Mayfair collection

### Test Certification

UL (Underwriters Laboratories) test certificates available for the USA - will incur a surcharge  
IEC (International Electrotechnical Commission) test certificates available - will incur a surcharge  
Suitable for Yachts - Rod and bolting available for use on yachts

### Compatible with



Yacht Club



CL100-5 in Brushed Bronze with 16" Shades in COM Fabric 'Idrios Patina' from Romo and 1806W Timber Wolf

### Available Finishes

#### Metal Finish



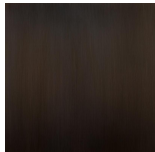
Brushed Gold

Brushed Nickel

Polished Gold



Polished  
Nickel



Bronze



Brushed  
Bronze

#### Recommended Shade(s) (OPTIONAL)

16" Drum

Available Sizes

---

**3 Light**  
CL100-3,  
Height: 85 cm (33.46")  
Diameter: 88 cm (34.65")  
Bulbs: 3 × 40W E27  
Net Weight: 6 kg / 14 lb

**5 Light**  
CL100-5,  
Height: 83 cm (32.68")  
Width: 135 cm (53.15")  
Length: 135 cm (53.15")  
Bulbs: 5 × 40W E27  
Net Weight: 8 kg / 18 lb

The height detailed is our standard height for this design. Please specify if you require a specific height.

Shades can also be made with Customer Own Material (COM)