

BELLA FIGURA

Catena Small Wall Light

WL827-SM

Collection Name

NEW PRODUCTS COLLECTION

The Catena series is sculptural in form, crafted in smooth alabaster with satin and brushed bronze detailing. Each piece showcases a rhythmic, chain-like silhouette, a balance of strength and elegance. The name Catena, taken from the Latin for "chain" and used to describe crater chains on planetary surfaces, is reflected in the lamps' distinctive linked form. The natural translucence of alabaster introduces a soft, atmospheric glow, while refined metalwork adds a contemporary finish. Designed as complementary pieces, the Catena lamps bring cohesion and quiet sophistication to any interior scheme, echoing both natural wonder and modern artistry.

Compatible with



Yacht Club



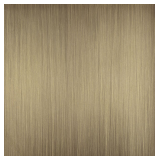
WL827-SM in Alabaster and Brushed Bronze with 8" Oval in Bennett Silks 1806W-21 Slate

Available Finishes

Metal Finish



Brushed Nickel



Brushed
Bronze



Brushed Gold

Stone Finish



Alabaster

Available Sizes

Small	Large
WL827-SM,	WL827-LA,
Height: 30 cm (11.81")	Height: 47 cm (18.5")
Width: 12 cm (4.72")	Width: 12 cm (4.72")
Depth: 11 cm (4.33")	Depth: 11 cm (4.33")
Bulbs: 1 x 25W E14	Bulbs: 1 x 25W E14
Dimmable	Dimmable
Net Weight: 2 kg / 4 lb	Net Weight: 3.5 kg / 8 lb

Dimensions are measured from the base of the lamp to the middle of the bulb holder and are excluding shade.
Overall height with recommended 8" oval shade is 43cm - 17"