

# BELLA FIGURA

## Bodice Table Lamp

TL663

Collection Name

**MOONLIGHT COLLECTION**

The Bodice table lamp is the English Rose of this latest collection; a feminine personality composed of elegance and beauty with an unmistakably graceful demeanour. This table lamp is comprised of a mouth blown body of glass and a solid, spun brass neck, both deftly crafted in the south of England.

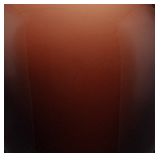
**Finish note:** This lamp finish is opaque; as these lamps are handmade by our artisans in England, they may vary from piece to piece in dimension and appearance.



TL663 in Ink Glass and Polished Nickel with a 12" Oval Shade in James Hare  
38000/64

### Available Finishes

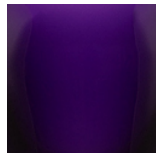
#### Glass Colour



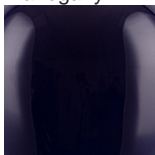
Mahogany



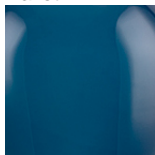
Ballet



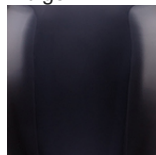
Indigo



Ink



Nightwatch



Storm

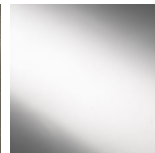
#### Neck and Bulb Holder



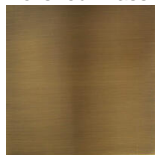
Polished Brass



Pewter

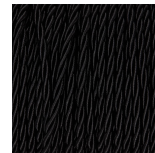


Polished Silver

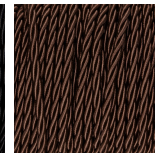


Antique Brass

#### Silk Flex Choice



Black



Brown



Cream



Silver

## Available Sizes

---

### One size only

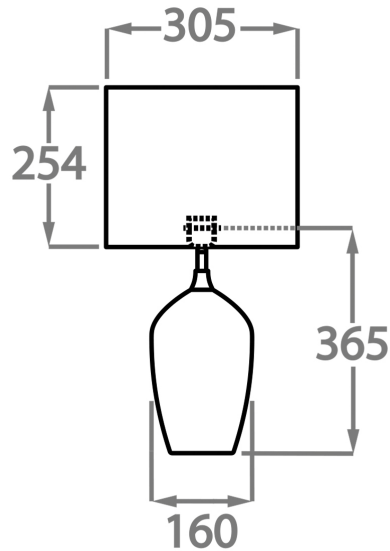
TL663,

Height: 36.5 cm (14.37")

Diameter: 16 cm (6.3")

1 x 40w E27

Max Watt and Lamps: 40w x 1



Dimensions are measured from the base of the lamp to the middle of the bulb holder and are excluding shade

Finish note: As these glass lamps are handmade by our artisans in England, they may vary slightly from piece to piece in dimension and appearance