

BELLA FIGURA

Bodice Table Lamp

TL663

Collection Name
MOONLIGHT COLLECTION

The Bodice table lamp is the English Rose of this latest collection; a feminine personality composed of elegance and beauty with an unmistakably graceful demeanour. This table lamp is comprised of a mouth blown body of glass and a solid, spun brass neck, both deftly crafted in the south of England.

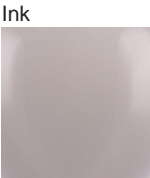
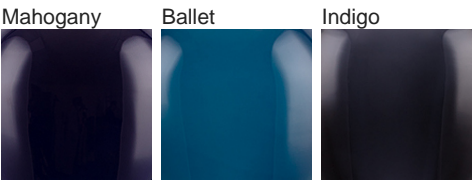
Finish note: This lamp finish is translucent; as these lamps are handmade by our artisans in England, they may vary from piece to piece in dimension and appearance.



TL663 in Mahogany and Antique Brass with a 12" Oval Shade in James Hare in 38000/118 Snakeskin

Available Finishes

Glass Colour



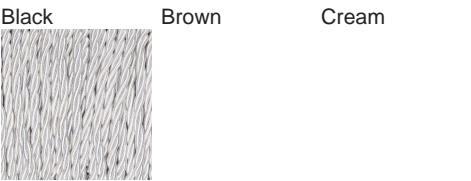
Raincloud

Neck and Bulb Holder



Antique Brass

Silk Flex Choice



Silver

Available Sizes

One size only

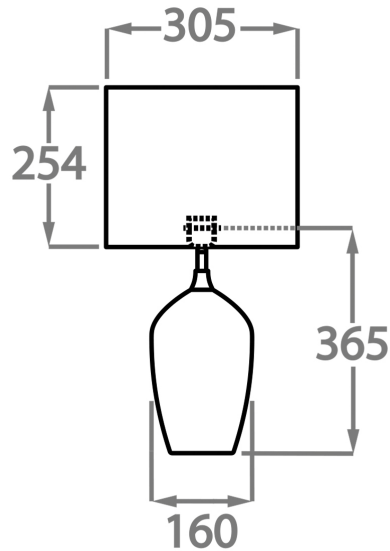
TL663,

Height: 36.5 cm (14.37")

Diameter: 16 cm (6.3")

1 x 40w E27

Max Watt and Lamps: 40w x 1



Dimensions are measured from the base of the lamp to the middle of the bulb holder and are excluding shade
The overall height with a 12" oval shade is 57cm

Finish note: As these glass lamps are handmade by our artisans in England, they may vary slightly from piece to piece in dimension and appearance