

BELLA FIGURA

Bodice Lamp

TL663

Collection Name

MOONLIGHT COLLECTION

The Bodice table lamp is the English Rose of this latest collection; a feminine personality composed of elegance and beauty with an unmistakably graceful demeanour. This table lamp is comprised of a mouth blown body of glass and a solid, spun brass neck, both deftly crafted in the south of England.

IMPORTANT NOTE - Raincloud, Nightwatch and Ballet glass finishes are currently only available as singles.

Compatible with



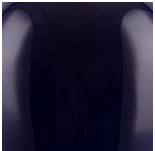
Express



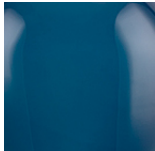
TL663 in Raincloud and Polished Nickel with a 12" Oval Shade in James Hare Aquila Moondust 31606/01

Available Finishes

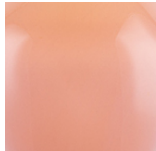
Glass Finish



Ink



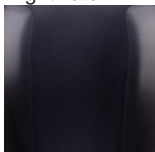
Nightwatch



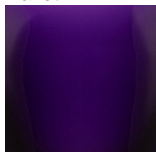
Ballet



Raincloud



Storm



Indigo

Neck and Bulb Holder



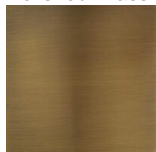
Polished Brass



Pewter



Polished Silver

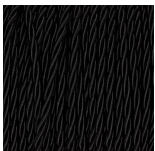


Antique Brass

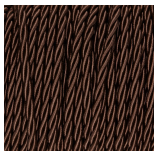
Recommended Shade(s) (OPTIONAL)

12" Oval

Silk Flex



Black



Brown



Cream



Silver

Available Sizes

One size only

TL663,

Height: 36.5 cm (14.37")

Diameter: 16 cm (6.3")

Depth: 12 cm (4.72")

Bulbs: 1 x 40W E27

Net Weight: 9 kg / 20 lb Cable Exit:

Top

Dimensions are measured from the base of the lamp to the middle of the bulb holder and are excluding shade

The overall height with a 12" oval shade is 57cm

Finish note: As these glass lamps are handmade by our artisans in England, they may vary slightly from piece to piece in dimension and appearance