

BELLA FIGURA

Bijou Lamp

TL661-SME

Collection Name

CONTOUR COLLECTION

An uncomplicated jewel of utmost sophistication, which will place itself effortlessly within a vast array of settings. The Bijou lamp is a fusion of English blown glass and Italian gilding to create this versatile and feminine gem of distinction.

Compatible with



Express



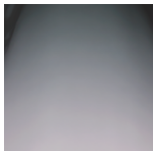
Yacht Club



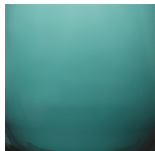
Bijou Lamp in Heliotrope and Brushed Gold with 9" Tall Drum Shade in Silk Linen
3998/Natural N

Available Finishes

Glass Colour



Wolf Grey



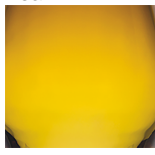
Teal



Heliotrope



Steel Blue

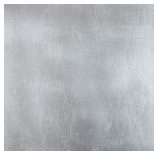


Amber

Metal Finishes



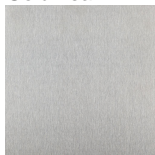
Gold Leaf



Silver Leaf

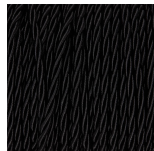


Brushed Gold

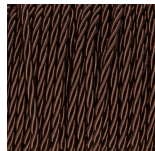


Brushed Nickel

Silk Flex Choice



Black



Brown



Silver

Available Sizes

Size One

TL661-SM,

Height: 31 cm (12.2")

Diameter: 16.5 cm (6.5")

1 x 60W E27

Max Watt and Lamps: 60W x 1

Size Two

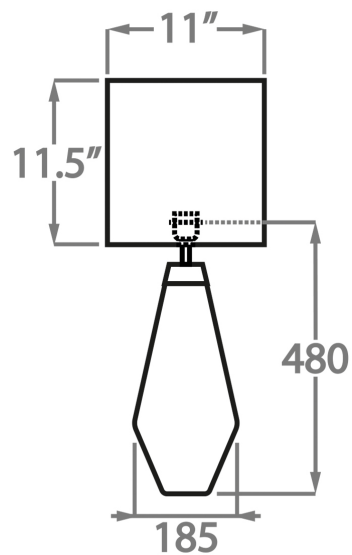
TL661-LA,

Height: 48 cm (18.9")

Diameter: 18.5 cm (7.28")

1 x 60W E27

Max Watt and Lamps: 60W x 1



TL661-SM: Overall height with a 10" Tall Drum Shade 63cm - 24.8inch

TL661-LA: Overall height with a 12" Tall Drum Shade 75cm - 30inch