

# BELLA FIGURA

## Bijou Lamp

TL661-LA

Collection Name

**CONTOUR COLLECTION**

An uncomplicated jewel of utmost sophistication, which will place itself effortlessly within a vast array of settings. The Bijou lamp is a fusion of English blown glass and Italian gilding to create this versatile and feminine gem of distinction, now available in a statuesque larger size

**Compatible with**



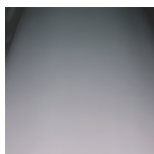
Yacht Club



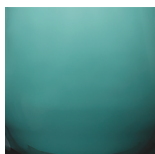
TL661 in Heliotrope and Brushed Nickel with 12" Tall Drum Shade in Silk Linen 3998/Natural N

### Available Finishes

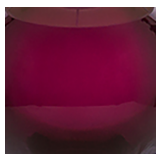
#### Glass Colour



Wolf Grey



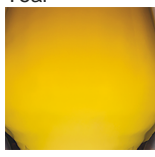
Teal



Heliotrope



Steel Blue



Amber

#### Metal Finishes



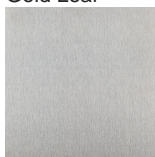
Gold Leaf



Silver Leaf

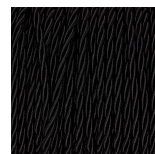


Brushed Gold

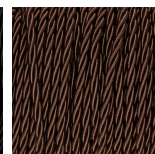


Brushed Nickel

#### Silk Flex Choice



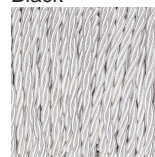
Black



Brown



Cream



Silver

## Available Sizes

---

### Size One

TL661-SM,

Height: 31 cm (12.2")

Diameter: 16.5 cm (6.5")

1 x 60w E27

Max Watt and Lamps: 60w x 1

### Size Two

TL661-LA,

Height: 48 cm (18.9")

Diameter: 18.5 cm (7.28")

1 x 40W E27

Max Watt and Lamps: 40W x 1

TL661-SM: Overall height with a 10" Tall Drum Shade 63cm - 24.8inch

TL661-LA: Overall height with a 12" Tall Drum Shade 75cm - 30"