

BELLA FIGURA

Athena Table Lamp

TL823

Collection Name
VEGA COLLECTION

An ode to the deity, Athena, a goddess of wisdom and craft. This contemporary model is styled on the traditional form of a Greek amphora with exaggerated, angular arms in stark contrast to its rounded body. Athena is an adaptable statement piece which possesses the ability to claim focus or quietly set the tone of its setting depending upon the selection of finishes.

Compatible with



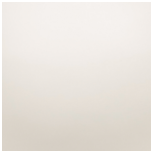
Yacht Club



TL823 in Crackle and Polished Brass with 12" Tall Drum Shade in James Hare Vyne Silk Rose Quartz 31625/13

Available Finishes

Ceramic Colours



Chalk



Crackle



Jasper



Tabasco

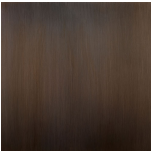


Dapple Grey

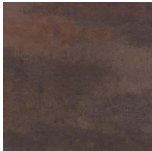


Starry Sky

Neck and Bulb Holder



Bronze



Old English
Brass



Polished Brass



Polished
Nickel

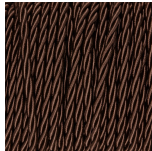
Silk Flex Choice



Black



Cream



Brown



Silver

Available Sizes

Size One

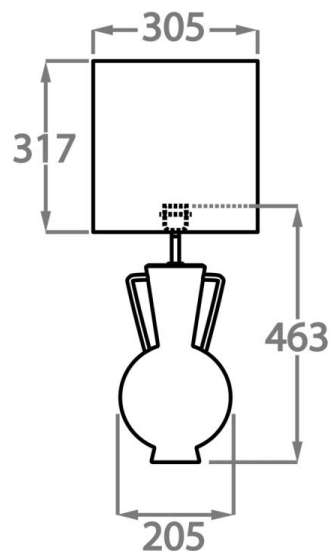
TL823,

Height: 46.3 cm (18.23")

Diameter: 20.5 cm (8.07")

1 x 40W E27

Max Watt and Lamps: 40W x 1



Dimensions are measured from the base of the lamp to the middle of the bulb holder and are excluding shade.
Overall height with recommended 12" tall drum shade is 74.2cm - 29.2"