

BELLA FIGURA

Atacama Lamp

TL234

Collection Name

HALCYON COLLECTION

Atacama, Chile, is one of the driest areas in the world and within this remote desert lies beauty of ethereal quality. An extra-terrestrial landscape of pink birds and imposing, eerie pockets of water bubbling and jets of steam bursting into the sky. Most unusual of all is the vast white jigsaw spanning as far as the eye can see, the salt flats of Atacama. Our new design of the same name retraces the natural pattern scored through this salt mosaic in a delightful array of glass colours.

Required modifications for use on yachts - lacquer applied to all metal components, "sea rod" through centre to secure base to surfaces, with the cable exit through bottom of the base.

Compatible with



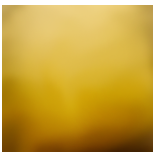
Yacht Club



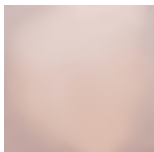
TL234 in Ocean Blue and Brushed Nickel with a 15" Oval Drum Shade in Crepe Satin 1806W-63 Petrol

Available Finishes

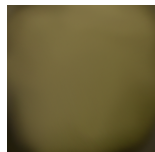
Glass Colour



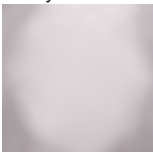
Halcyon Amber



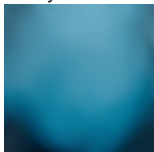
Halcyon Blush Pink



Halcyon Bronze



Halcyon Clear

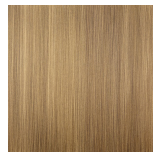


Halcyon Ocean Blue

Neck and Bulb Holder



Brushed Nickel



Brushed Brass

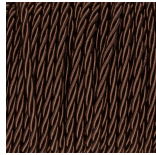
Recommended Shades

11 inch Tall Drum 15 inch Oval Drum

Silk Flex Choice



Black



Brown



Cream



Silver

Available Sizes

One Size Only

TL234,

Height: 27.5 cm (10.83")

Width: 27 cm (10.63")

Depth: 22 cm (8.66")

1 x 40W E27

Max Watt and Lamps: 40W x 1

Net Weight: 4 kg / 9 lb Cable Exit:
Bottom

Dimensions are measured from the base of the lamp to the middle of the bulb holder and are excluding shade

The overall height with a 15" oval drum shade 48cm - 19"

The overall height with a 11" tall drum shade 52cm - 20.5"

Finish note: As these glass lamps are handmade by our artisans in England, they may vary slightly from piece to piece in dimension and appearance