

BELLA FIGURA

Anvil Wall Light

WL57

Collection Name

CANTERBURY COLLECTION

The perfect addition to the Canterbury collection and inspired by the heavyweight Anvil metal working tool used to hammer and beat metal into shape. The Anvil wall light is made up of an individual ring of beaten metal, in which sits double ended slender shades. Which together create elegant framework, crafted in our metal workshop in Italy.

Compatible with



Yacht Club



WL57 in Hammered Antique Gold and WL57-Shades in Crepe Satin 1806W/ 012 Frosted Almond

Available Finishes

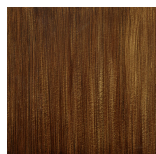
Metal Finishes



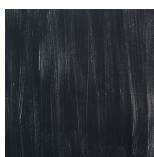
Antique Gold



Antique Silver



Decorated
Bronze



Lead

Recommended Shades

Long Half Oval

Available Sizes

One Size

WL57,

Height: 25 cm (9.84")

Diameter: 8 cm (3.15")

2 x 40w E14 LED Bulbs

Max Watt and Lamps: 40w x 2

Please note the above measurements are including shade; the overall height of the metal frame not including the shade is 15cm - 6"
Overall diameter of the 1/2 oval shade 18cm - 7"