

# BELLA FIGURA

## Alto Chandelier

### CL460

Collection Name

#### RETRO MURANO COLLECTION

The latest addition to our Retro Murano collection, the Alto chandelier is beautifully long and slender. It has been designed to add a touch of style and glamour to atriums and double height hallways, either as a single piece or in a cluster of 3 or more set at different heights. The glass rods are available in four colours - clear, smoke, clear & gold or clear & silver - with the gold and silver options featuring our latest innovation of metal flecks set inside clear glass.

#### Test Certification

UL (Underwriters Laboratories) test certificates

available for the USA - will incur a surcharge

IEC (International Electrotechnical Commission) test

certificates available - will incur a surcharge



CL460-160 in Smoke Triangular Flat Cut and Chrome

#### Available Finishes

##### Metal Finish



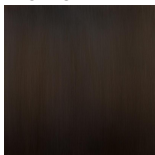
Brushed  
Bronze



Brushed Nickel



Brushed Gold

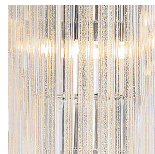


Bronze

##### Murano Glass Finish



Clear Flat  
Triangular



Clear & Gold  
Triangular Flat  
Cut



Clear & Silver  
Triangular Flat  
Cut



Smoke Flat  
Triangular



Satin Flat  
Triangular

## Available Sizes

---

### One Size

CL460-160,  
Height: 160 cm (62.99")  
Diameter: 24 cm (9.45")  
Bulbs: 12 x 25W G9  
Net Weight: 62 kg / lb

### Two Size

CL460-200,  
Height: 200 cm (78.74")  
Diameter: 24 cm (9.45")  
Bulbs: 21 x 25W G9  
Net Weight: 75 kg / lb

The dimensions of the central rod and ceiling rose are not included in the height measurements given above  
The standard rod and ceiling rose is 50cm (20"), but this can be ordered in different sizes by the customer.