

BELLA FIGURA

Ashton Lamp

TL200

Collection Name

STONE COLLECTION

An elegant rectangular table lamp made out of satin finished marble with decorative strips of brass inserted into the stone on three sides. This new table lamp is slightly retro and yet very contemporary and stylish.

Test Certification

IEC (International Electrotechnical Commission) test certificates available

UL (Underwriters Laboratories) test certificates available for the USA - will incur a surcharge

Suitable for Yachts - Rod and bolting available for use on yachts

Compatible with



Yacht Club



TL200 in cream satin marble and bronze with a 15 inch straight oval shade in silk crepe satin 1806W/ 1012 Dust

Available Finishes

Metal Finishes



Brushed Nickel

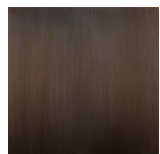
Polished Nickel



Brushed Gold



Polished Gold



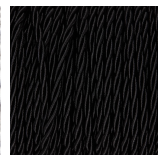
Bronze

Silk Flex Choice, Switch & Plug Colours



Cream

Silver

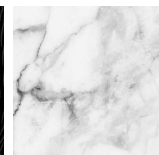


Black



Brown

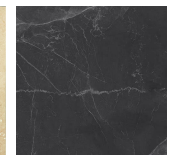
Marble colours



Satin Arabescato (White)



Satin Crema Marfil (Cream)



Satin Nero Marquina (Black)

Shade Silks

Over 300 Standard Silk options available

Inner Card Lining options in Cream / Gold / Champagne/ Silver / White

Available Sizes

BELLA FIGURA

One Size Only

TL200

Height: 48 cm (18.9")

Width: 14 cm (5.51")

Depth: 8.5 cm (3.35")

1 x 40w

Max watt and Lamps (Lamps Not Included)

Dimensions are measured from the base of the lamp to the middle of the bulb holder and are excluding shade.

Shades are also available in Customer Own Material (COM)

Overall height with a 15" straight oval shade 69cm - 27.2"