

BELLA FIGURA

Bodice Table Lamp

TL663

Collection Name

MOONLIGHT COLLECTION

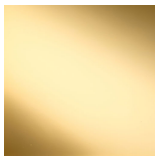
The Bodice table lamp is the English Rose of this latest collection; a feminine personality composed of elegance and beauty with an unmistakably graceful demeanour. This table lamp is comprised of a mouth blown body of glass and a solid, spun brass neck, both deftly crafted in the south of England. Finish note: This lamp finish is opaque; as these lamps are handmade by our artisans in England, they may vary from piece to piece in dimension and appearance.



TL663 in storm and pewter with a 12" oval shade in James Hare 8308/03

Available Finishes

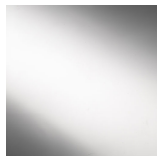
Neck and Bulb Holder



Polished Brass



Pewter

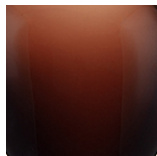


Polished Silver

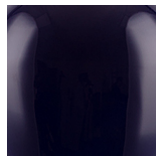


Antique Brass

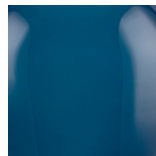
Glass colours



Mahogany



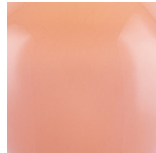
Ink



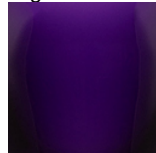
Nightwatch



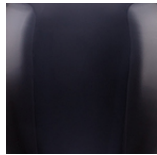
Raincloud



Ballet



Indigo



Storm

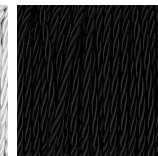
Silk Flex Choice, Switch & Plug Colours



Cream



Silver



Black



Brown

Shade Silks

Over 300 Standard Silk options available

Inner Card Lining options in Cream / Gold /

Champagne/ Silver / White

BELLA FIGURA

Available Sizes

One size only

TL663

Height: 36.5 cm (14.37")

Diameter: 16 cm (6.3")

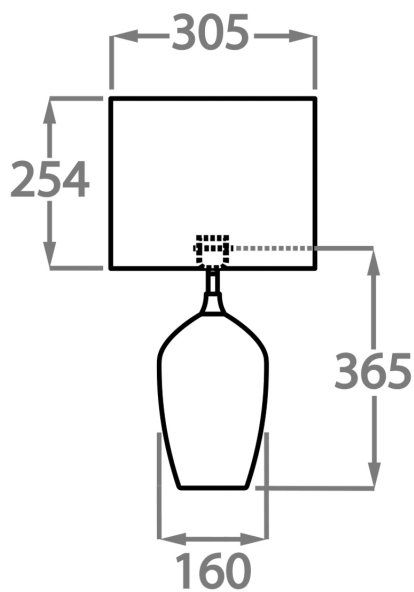
Depth: 12 cm (4.72")

Height with Shade: 57cm (As shown with 12 inch oval shade)

1 x 40w E26

Max watt and Lamps: 40w

Net Weight: 9 kg / 20 lb



Dimensions are measured from the base of the lamp to the middle of the bulb holder and are excluding shade

The overall height with a 12" oval shade is 57cm

Finish note: As these glass lamps are handmade by our artisans in England, they may vary slightly from piece to piece in dimension and appearance